



SIM Card Setup

APN Install & Enabling Cellular Data



INSTALLATION GUIDE

<http://wifi.co.jp/support/apn>

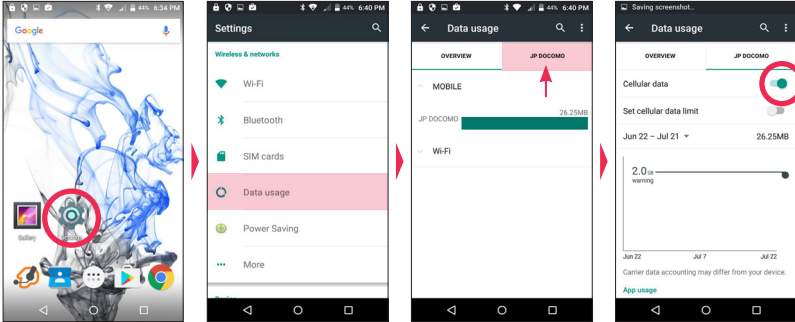
EXCLUSIVE SERVICE for Espas Communications group customers (Multimax Co. Ltd. / JB Network Co. Ltd. / WiFi Japan)

ANDROID DEVICES

For Docomo and EMobile SIM Cards



ENABLE CELLULAR DATA



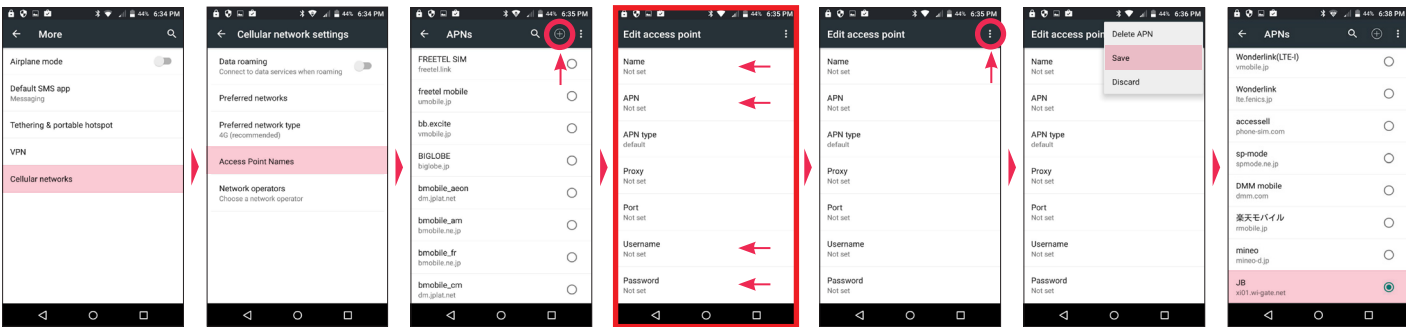
Press **Settings** → Press **Data usage** → Tap the Carrier name (**Docomo** or **Softbank**) → Enable **Cellular data**

IMPORTANT DOCUMENT

To use the Android installation guide get the document with the **IMPORTANT DOCUMENT** written on the top right of the paper

Use the fields marked in the **red box** to setup the APN on your cellphone

APN SETUP



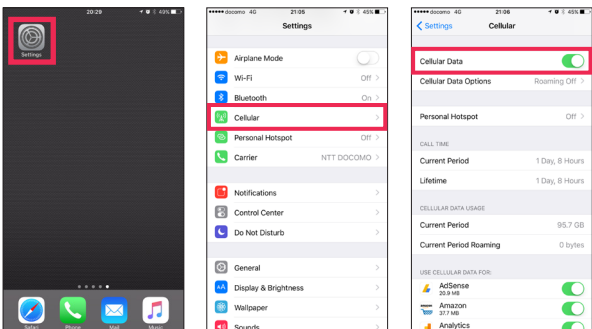
Tap Settings > More > **Cellular Networks** → Press **Access Point Names** → Press **+** to create a new APN account → Fill the fields as indicated → Press the **Menu** icon → **Save** → Select the **JB** option

iOS DEVICES (iPhone or iPad)

For Docomo SIM Cards

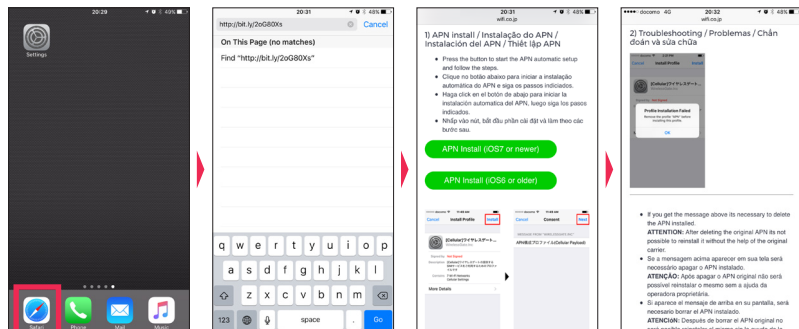


ENABLE CELLULAR DATA



Tap **Settings** → Press **Cellular** → Turn on **Cellular Data**

APN SETUP



Open **Safari** Browser → Visit <http://wifi.co.jp/support/apn> → Press the **green button** of your iOS version. Done! → If you get Troubleshooting follow step 2

ESPas
communications

www.wifi.co.jp
mail@wifi.co.jp
Fax: 048-829-9436

〒338-0822 Saitama-ken Saitama-shi Sakura-ku Nakajirina 1-27-1-1F

Customer Service / Central de Atendimento

03-4580-4936

Monday to Friday from 11h ~ 20h / Thứ Hai đến thứ Sáu 11h-20h hàng tuần
Seg. a Sex. das 11h ~ 20h / Lunes a Viernes de 11h ~ 20h



Seg. a Sex. das 11h ~ 20h



Lunes a Viernes de 11h ~ 20h



Monday to Friday from 11h ~ 20h



Thứ Hai đến thứ Sáu 11h-20h hàng tuần